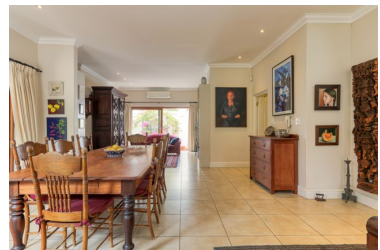




**R7,895,000**

Web Ref SIR114050



**SECLUDED SYLVAN CUL DE SAC  
MODERN STYLISH  
SOPHISTICATED EXECUTIVE  
FAMILY HOME MOVE IN  
CONDITION**

LOCATION! LOCATION! LOCATION!

NEW RELEASE - SOLE MANDATE

VERSATILE HOME OFFICE/DUAL LIVING / INCOME PRODUCING POTENTIAL

This pristine low maintenance modern 4 en-suite bedroomed executive family residence featuring high ceilings, excellent proportions and quality finishes throughout, nestles in a quiet little leafy cul de sac in the heart of lush and tranquil Morningside, adjacent to one of Tokai's famous landmarks, the gracious gabled home built in Cape Dutch style originally called "Voorspoed" but later in 1954 renamed as

<b>Bedrooms</b>	<b>4</b>
<b>Bathrooms</b>	<b>4.5</b>
<b>Floor Size</b>	<b>302m<sup>2</sup></b>
<b>Land Size</b>	<b>996m<sup>2</sup></b>
<b>Garages</b>	<b>2</b>
<b>Pool</b>	<b>Yes</b>
<b>Rates</b>	<b>R2,400</b>



**Herculene Visser**  
*Tokai*

Tel: 021 701 2446  
Mobile: 083 658 2686  
herculene.v@sothebysrealtyss.co.za

The information set forth on this site is based upon information which we consider reliable, but because it has been supplied by third parties to our franchisees (who in turn supplied it to us), we cannot represent that it is accurate or complete, and it should not be relied upon as such. The offerings are subject to errors, omissions, changes, including price, or withdrawal without notice. All dimensions are approximate and have not been verified by the selling party and cannot be verified by Lew Geffen Sotheby's International Realty. It is recommended that you hire a professional in the business of determining dimensions, such as an appraiser, architect or civil engineer, to determine such information. Each office is independently owned and operated.

